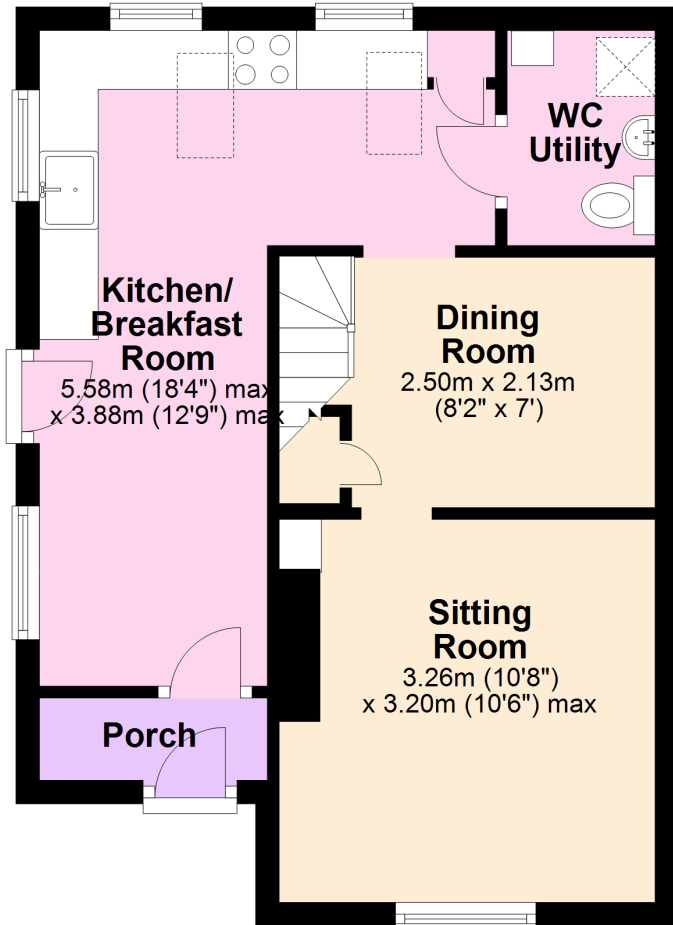


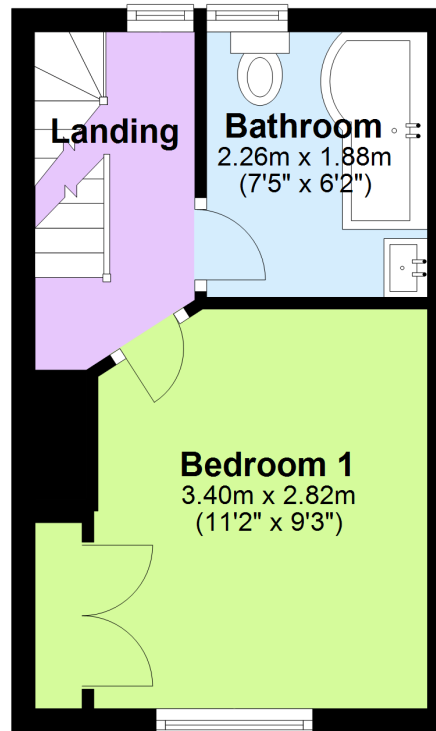
## Ground Floor

Approx. 36.3 sq. metres (390.4 sq. feet)



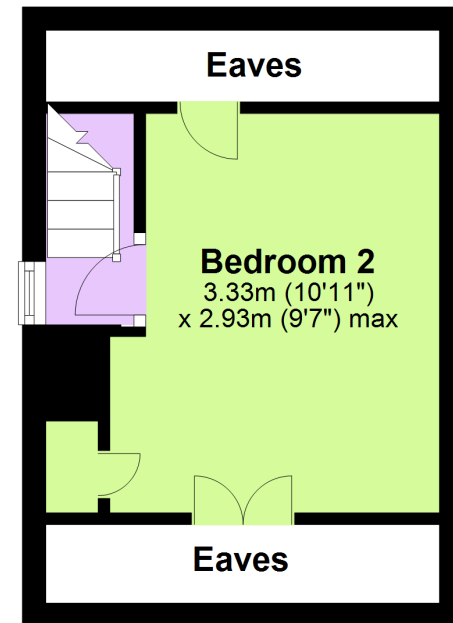
## First Floor

Approx. 19.2 sq. metres (207.0 sq. feet)



## Second Floor

Approx. 16.4 sq. metres (176.7 sq. feet)



Total area: approx. 71.9 sq. metres (774.1 sq. feet)