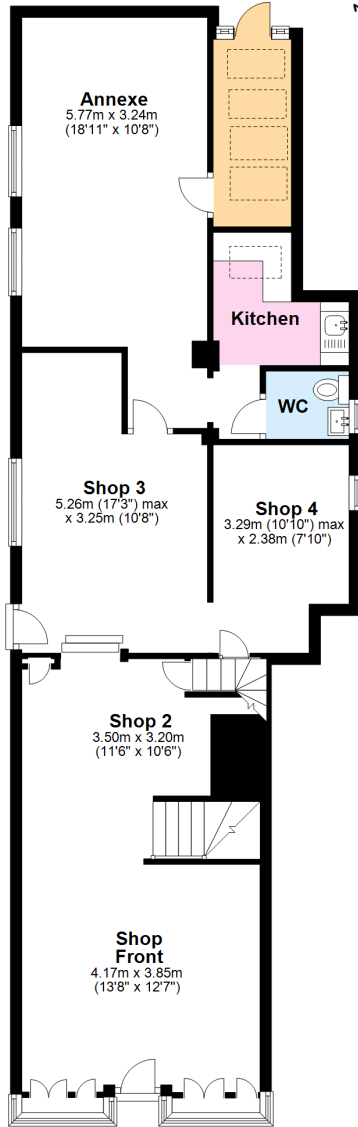
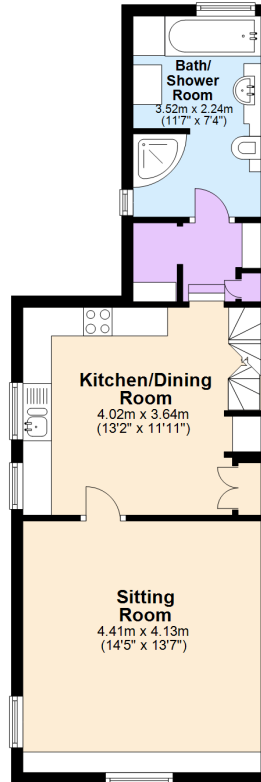


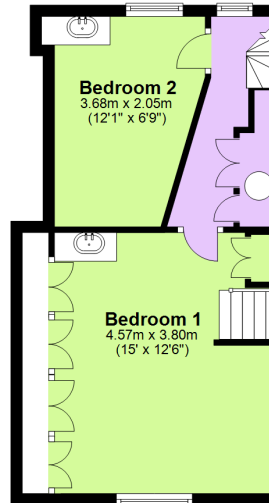
**Ground Floor**  
Approx. 89.3 sq. metres (961.1 sq. feet)



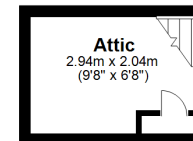
**First Floor**  
Approx. 44.6 sq. metres (479.9 sq. feet)



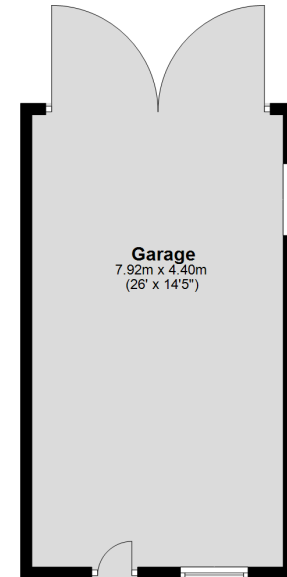
**Second Floor**  
Approx. 34.8 sq. metres (374.2 sq. feet)



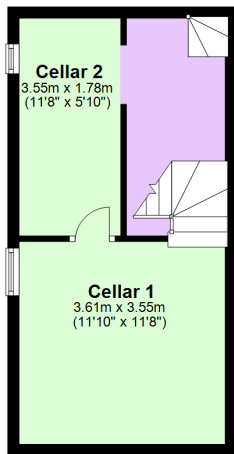
**Third Floor**  
Approx. 6.0 sq. metres (64.6 sq. feet)



**Garage**  
Approx. 34.8 sq. metres (375.1 sq. feet)



**Basement**  
Approx. 26.5 sq. metres (284.9 sq. feet)



Total area: approx. 235.9 sq. metres (2539.7 sq. feet)